

2011

Directory of School Mental Health Programs in West Virginia



**Expanded
School
Mental
Health
in West Virginia**

...because a healthy student is a teachable student

Prepared by the School Health
Technical Assistance Center at

Marshall University

Updated 10/18/11

www.schoolmentalhealthwv.org

*For corrections, updates or more
information, please see contact
information inside.*

Table of Contents

| | |
|--|----|
| West Virginia Expanded School Mental Health Initiative..... | 3 |
| Programs in this Directory..... | 3 |
| WV School Health Technical Assistance Center..... | 4 |
| Other Resources..... | 6 |
| Useful Websites for Expanded School Mental Health Efforts..... | 7 |
| School Mental Health Programs..... | 8 |
| Barbour..... | 8 |
| Cabell..... | 9 |
| Calhoun..... | 24 |
| Fayette..... | 27 |
| Greenbrier..... | 31 |
| Hardy..... | 34 |
| Kanawha..... | 36 |
| Lincoln..... | 40 |
| Marion..... | 41 |
| McDowell..... | 43 |
| Mercer..... | 44 |
| Nicholas..... | 45 |
| Ohio..... | 47 |
| Pendleton..... | 48 |
| Pleasants..... | 49 |
| Ritchie..... | 53 |
| Tucker..... | 54 |
| Wayne..... | 55 |
| Webster..... | 57 |
| Wirt..... | 58 |
| Wood..... | 61 |
| Community-Based Programs Providing School Health | |
| Hancock..... | 63 |
| Ohio..... | 64 |

West Virginia Expanded School Mental Health Initiative

There is clear and compelling evidence linking mental health and academic success, and indicating that emotional, social and behavioral health problems are significant barriers to learning. Schools that proactively address these problems are seeing improved academic outcomes.

In order to address mental health problems early, we must reach children where they spend the majority of their time—in schools. Schools offer unparalleled access to students in order to address both academic and mental health needs, which are intricately related. Schools are often the only public facility in rural areas, and a logical place for multiple agency and family collaboration for youth with complex mental, emotional and behavioral health challenges. Opening school doors to health care and mental health supports opens pathways to children's educational attainment and lifelong well-being.

For more than ten years, the Children's Division of the West Virginia Bureau for Behavioral Health has awarded block grant funds to School-Based Mental Health (SBMH) Programs across West Virginia. In order to further develop school mental health efforts, the West Virginia Expanded School Mental Health (ESMH) Initiative was developed as a joint effort of the West Virginia Department of Education and the Children's Division of the West Virginia Bureau for Behavioral Health, Department of Health and Human Resources. The work of the ESMH Steering Team is recognized through a Memo of Understanding between the DHHR and the WVDE. The WV Behavioral Health Commission also recognizes the steering team as a subcommittee to carry out its recommendations regarding school based mental health.

Programs in this Directory

School mental health programs take many forms in West Virginia. The criteria for inclusion in this directory include:

- Programs must be present in the school on a weekly basis
 - Mental health services should be made available to all students
 - There must be a formal memorandum of understanding between the school and the sponsoring agency
- Or
- The program is in the planning stages for the development of Expanded School Mental Health

This directory is not a complete listing, but we hope it will be a useful resource for communities and providers. The schools where SMH services are available are ordered by county. Also included are a description of the Marshall University School Health Technical Assistance Center, a list of useful websites, contact persons and an index.



WV School Health Technical Assistance Center

The place to go for resources, assistance, and training related to school-based health centers, school-based behavioral and oral health programs in West Virginia.

Our Role

- Assist communities in planning and starting school-based health centers
- Facilitate networking among school-based medical, behavioral health and oral health providers and others interested in children's health
- Assist school health providers to improve quality of care and management of school-based programs
- Provide technical support for school-based medical, behavioral health and oral health providers and support staff
- Develop data and evaluation systems for school-based initiatives such as behavioral health, oral health.
- Make data regarding school-based special initiatives available to interested groups (SBHA, policy makers, national organizations, collaborative partners in health promotion, etc.)

Resources

- Directories of the school-based health centers and behavioral health programs in West Virginia
- Interdisciplinary professional development workshops and teleconferences
- Resources on the web at www.wvsbha.org
- Tool kits on topics of interest:
 - Planning and marketing the SMH programs
 - Promoting prevention and early intervention
 - Planning for the ESMH model
 - School mental health program operations
 - Stakeholder involvement
 - Identification, referral and assessment
 - School coordination and collaboration
 - Community collaboration and coordination
 - Quality assessment and improvement
 - Parent engagement
 - School connectedness
 - School safety

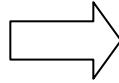


The WV School Health Technical Assistance Center is funded by:
Claude Worthington Benedum Foundation
Sisters of St. Joseph Health and Wellness Foundation
West Virginia Bureau for Public Health
West Virginia Bureau of Behavioral Health and Health Facilities

For Information About:

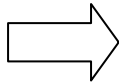
Contact:

Evaluation design and analysis, clinical audits, community organization and planning



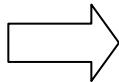
Richard Crespo, PhD, Professor
Robert C. Byrd, Center for Rural Health
1600 Medical Center Drive, Suite 1400
Huntington, WV 25701
Phone: 304-691-1193
Fax: 304-691-1183
Email: crespo@marshall.edu

Mental health integration, expanded school mental health funding, and planning



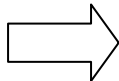
Linda Anderson, MPH
159 Honeysuckle Lane
Huntington, WV 25701
Cell phone: 304-544-3917
Email: landerson@marshall.edu

Technical assistance and program evaluation for school mental health programs, expanded school mental health programs, mental health continuing education workshops, data management and evaluation



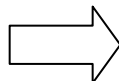
Stephanie Hayes, MA
126 Applewood Drive
Ona, WV 25545
Phone: 304-634-7769
Fax: 304-743-7234
Email: stephanie.hayes@marshall.edu

School health technical assistance, data management and evaluation for special initiatives, satisfaction surveys, SBHC website for MU Technical Assistance Center



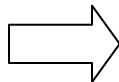
Stephanie Montgomery
5979 Two Ford Road
Roanoke, VA 24018
Phone/Fax: 540-776-7953
Cell phone : 304-634-1008
Email: smontgom@marshall.edu

Health center management, clinical services, standards, quality improvement, continuing education workshops



Paula Fields, MSN, RN
142 Hurd Road
Nettie, WV 26681
Phone & Fax: 304-846-9739
Email: pfields4@yahoo.com

Community Oral Health Coordinator
Oral Health Program development, technical assistance, evaluation, consultation and training, including community organization, staff development and planning



Bobbi Jo Muto, RDH, BS
3738 Cambridge Dr
Hurricane, WV 25526
Phone: 304-542-9592
Email: bjmuto.steele@marshall.edu

WV School Health Technical Assistance Center
Robert C. Byrd Center for Rural Health
1600 Medical Center Drive, Suite 1400
Huntington, WV 25701

www.schoolmentalhealthwv.org

Other Resources

JACKIE PAYNE, DIRECTOR

WV Bureau for Behavioral Health
and Health Facilities
Adolescent and Children's Behavioral Health
350 Capitol Street, Room 350
Charleston, WV 25301-3716
Phone: 304-558-0627 Fax: 304-558-1008
Email: jackie.f.payne@wv.gov

**BARBARA ASHCRAFT, MA, LPC
SCHOOL COUNSELING COORDINATOR**

Office of School Improvement
WV Department of Education
Building 6, Room 221
1900 Kanawha Blvd.
Charleston, WV 25305-0330
Phone: 558-2348 Fax: 558-3946
Email: bashcraft@access.k12.wv.us

**SHELLEY DEBERRY
STUDENT SUCCESS ADVOCATE COORDINATOR**

Office of School Improvement
WV Department of Education
Building 6, Room 221
1900 Kanawha Blvd.
Charleston, WV 25305-0330
Phone: 304- 558-3199 Fax:304- 558-1834
Email: sdeberry@access.k12.wv.us

KELLI CASEMAN, EXECUTIVE DIRECTOR

WV School-Based Health Assembly
PO. Box 11436
Charleston, WV 25339
Phone: 304-444-5917
Email: wvsbha@gmail.com

**TIFFANY PITTMAN, PLANNING AND PROGRAM
DEVELOPMENT**

WV Bureau for Behavioral Health
and Health Facilities
Adolescent and Children's Behavioral
Health
350 Capitol Street, Room 350
Charleston, WV 25301-3716
Phone: 304-558-6249 Fax: 304-558-1008
Email: tiffany.J.Pittman@wv.gov

**MELANIE PURKEY, EXECUTIVE DIRECTOR
OFFICE OF HEALTHY SCHOOLS**

WV Department of Education
Office Healthy Schools
1900 Kanawha Blvd. E.
Building 6
Charleston, WV 25305
Phone: 558-8830
Fax: 558-3787
Email: mpurkey@access.k12.wv.us

**REBECCA KING, RN, MSN, MED
SCHOOL HEALTH SERVICES COORDINATOR**

WV Department of Education
Office of Healthy Schools
Building 6, Room 309
1900 Kanawha Blvd.
Charleston, WV 25305-0330
Phone: 558-8830 Fax: 558-3787
Email: rjking@access.k12.wv.us

TERESA MACE

Coordinated School Health Program
Director
WVDHHR
350 Capitol Street, Room 702
Charleston, WV 25301-3716
Phone: 304-356-4225
Email: teresa.l.mace@wv.gov

Useful Websites for School Mental Health Efforts

West Virginia School Mental Health Initiative

www.schoolmentalhealthwv.org

University of Maryland Center for School Mental Health Assistance

<http://csmha.umaryland.edu/>

Center for Mental Health Services

<http://www.mentalhealth.org/cmhs/>

The Miami University (of Ohio)

Center for School Based Mental Health Programs

<http://www.muohio.edu/csbmhp/>

National Association of School Psychologists

<http://www.naspweb.org//>

UCLA Center for Mental Health in Schools

<http://smhp.psych.ucla.edu/>

West Virginia Department of Education:

The 21st Century Community Learning Center Programs

<http://wvde.state.wv.us/21stccclc/programs.html>

School Counseling: <http://wvde.state.wv.us/counselors/>



Cabell County

WEST VIRGINIA SCHOOL-BASED HEALTH CENTER DIRECTORY 2011-2012

Enrollment:

276

Grades:

PreK-05

Funding:

- WV Bureau for Behavioral Health (SBMH Block Grant)
- Cabell Co. Board of Education
- Billing

School: Altizer Elementary School

250 Third Street, Altizer
Huntington, WV 25705
Phone: 304-528-5100
Fax : 304-528-5148

School's Webpage: <http://altizer.cabe.k12.wv.us/>

School Mental Health Provider: open position

Phone: 304-525-7851
Email:

Days & Hours of Operation:

Services Provided:

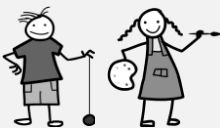
- Mental health counseling – individual, group and family
- Targeted case management
- Assessment / Treatment planning
- Crisis intervention
- Supportive intervention

Sponsoring Agency: Pretera Center for Mental Health

PO Box 8069
Huntington, WV 25705
Phone: 304-525-7851
Fax: 304-399-1022

Contact Person: Lora Sammons, West SBMH Supervisor

Phone: 304-525-7851 ext. 2127
Mobile: 304-416-2339
Email: lora.sammons@pretera.org





Cabell County

WEST VIRGINIA SCHOOL-BASED HEALTH CENTER DIRECTORY 2011-2012

Enrollment:

490

Grades:

06-08

Funding:

- WV Bureau for Behavioral Health (SBMH Block Grant)
- Cabell Co. Board of Education
- Billing

School: Beverly Hills Middle School

2901 Saltwell Rd
Huntington, WV 25705
Phone: 304-528-5102
Fax : 304-528-5197
School's Webpage: <http://boe.cabe.k12.wv.us/bhms/>

School Mental Health Provider: Teri Stone, Therapist

Phone: 304-525-7851 ext. 8702
Email: teri.stone@prestera.org

School Mental Health Provider: Lana Stoler, Case Manager

Phone: 304-525-5175 ext. 3798
Email: lane.stoler@prestera.org

Days & Hours of Operation: Wed. & Thurs; 8am – 4pm

Services Provided:

- Mental health counseling – individual, group and family
- Targeted case management
- Assessment / Treatment planning
- Crisis intervention
- Supportive intervention

Sponsoring Agency: Prestera Center for Mental Health

PO Box 8069
Huntington, WV 25705
Phone: 304-525-7851
Fax: 304-399-1022

Contact Person: Lora Sammons, West SBMH Supervisor

Phone: 304-525-7851 ext. 2127
Mobile: 304-416-2339
Email: lora.sammons@prestera.org





Cabell County

WEST VIRGINIA SCHOOL-BASED HEALTH CENTER DIRECTORY 2011-2012

Enrollment:

varies

Funding:

- WV Bureau for Behavioral Health (SBMH Block Grant)
- Cabell Co. Board of Education
- Billing

School: Cabell County Career Technology Center

1035 Norway Ave
Huntington, WV 25705
Phone: 304-528-5172
Fax : 304-528-5110

School's Webpage: <http://boe.cabe.k12.wv.us/ctc/>

School Mental Health Provider: Teri Stone, Therapist

Phone: 304-525-7851 ext. 8702
Email: teri.stone@prestera.org

School Mental Health Provider: Lana Stoler, Case Manger

Phone: 304-525-5175 ext. 3798
Email: lane.stoler@prestera.org

Days & Hours of Operation: Wed; 8am – 4pm

Services Provided:

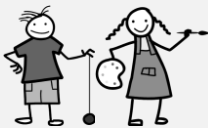
- Mental health counseling – individual, group and family
- Targeted case management
- Assessment / Treatment planning
- Crisis intervention
- Supportive intervention

Sponsoring Agency: Prestera Center for Mental Health

PO Box 8069
Huntington, WV 25705
Phone: 304-525-7851
Fax: 304-399-1022

Contact Person: Lora Sammons, West SBMH Supervisor

Phone: 304-525-7851 ext. 2127
Mobile: 304-416-2339
Email: lora.sammons@prestera.org





Cabell County

WEST VIRGINIA SCHOOL-BASED HEALTH CENTER DIRECTORY 2011-2012

Enrollment:

33

Grades:

06-12

Funding:

- WV Bureau for Behavioral Health (SBMH Block Grant)
- WV Bureau for Behavioral Health (ESMH Planning Grant)
- Cabell Co. Board of Education
- Billing

School: Cabell County Alternative Education High School

2800 5th Ave
Huntington, WV 25702
Phone: 304-528-5060
School's Webpage: None Provided

School Mental Health Provider: Teri Stone, Therapist

Phone: 304-525-7851 ext. 8702
Email: teri.stone@prestera.org

School Mental Health Provider: Lana Stoler, Case Manger

Phone: 304-525-5175 ext. 3798
Email: lane.stoler@prestera.org

Days & Hours of Operation: Wed; 8am – 4pm

Services Provided:

- Mental health counseling – individual, group and family
- Targeted case management
- Assessment / Treatment planning
- Crisis intervention
- Supportive intervention

Sponsoring Agency: Prestera Center for Mental Health

PO Box 8069
Huntington, WV 25705
Phone: 304-525-7851
Fax: 304-399-1022

Contact Person: Lora Sammons, West SBMH Supervisor

Phone: 304-525-7851 ext. 2127
Mobile: 304-416-2339
Email: lora.sammons@prestera.org





Cabell County

WEST VIRGINIA SCHOOL-BASED HEALTH CENTER DIRECTORY 2011-2012

School Enrollment:

1,883

Grades:

09-12

Co-Sponsors:

Valley Health Systems, Inc.
Prestera Center
Cabell Co. Board of Educ.

Funding:

- WV Bureau for Public Health
- WV Bureau for Behavioral Health
- Dept of Pediatrics at Marshall University
- Cabell County Schools
- Valley Health Systems

Cabell-Midland High School

2300 US Rt. 60, East
Ona, WV 25545
Phone: 304-743-7400; Fax: 304-743-7577
School's Webpage: <http://cmhs.cabe.k12.wv.us/>

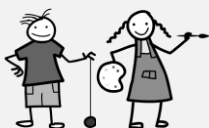
Cabell-Midland High Health Center

Address: same as school
Phone: (304) 743-7495 or 743-7331; Fax: (304) 743-6600

Mental Health Center Contact Person:

Lora Sammons, West SBMH Supervisor
Phone: 304-525-7851 ext. 2127
Mobile: 304-416-2339
Email: lora.sammons@prestera.org

| Services Provided | Clinic Schedule | Staff Names/Agency |
|------------------------------|--------------------------------------|---|
| Medical | Monday – Friday 7:30 am – noon | Robin Yearout, RN, FNP-C ryearout@access.k12.wv.us |
| | Wednesday 8:00 am – 4:00 pm | Patricia Kelly, MD kellyp@marshall.edu |
| Mental Health | Monday – Friday 8:00 am – 4:00 pm | Vicki Carovillano, RN, MA, LPC victoria.carovillano@prestera.org Chessie Short, BA chessie.short@prestera.org |
| Clerical – Care Coordination | Monday – Friday 7:30 am – 3:30 pm | Vicki Lee, MA vlee@vhs-wv.org |
| Nursing | Monday – Friday 7:30 am – 3:30 pm | Michelle Linville, RN, BSN michellel@vhs-wv.org |
| Other – Dietitian | One day per month | Jenna Matthews, RD huntingtonwic@wvdhhr.org Attn: Jenna |





Cabell County

WEST VIRGINIA SCHOOL-BASED HEALTH CENTER DIRECTORY 2011-2012

Enrollment:

551

Grades:

PK-05

Funding:

- WV Bureau for Behavioral Health (SBMH Block Grant)
- Cabell Co. Board of Education
- Billing

School: Central City Elementary School

2100 Washington Avenue
Huntington, WV 25704
Phone: 304-528-5231
Fax: 304-528-5245

School's Webpage: <http://centralcity.cabe.k12.wv.us>

School Mental Health Provider: Mark Salyers, Therapist

Phone: 304-525-7851 ext. 7606
Email: mark.salyers@prestera.org

School Mental Health Provider: Meredith Crawford, Case Manager

Phone: 304-525-7851 ext. 1007
Email: meredith.crawford@prestera.org

Days & Hours of Operation: Mon, Tue, Wed; 7:30am – 3:30pm

Services Provided:

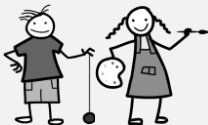
- Mental health counseling – individual, group and family
- Targeted case management
- Assessment / Treatment planning
- Crisis intervention
- Supportive intervention

Sponsoring Agency: Prestera Center for Mental Health

PO Box 8069
Huntington, WV 25705
Phone: 304-525-7851
Fax: 304-399-1022

Contact Person: Lora Sammons, West SBMH Supervisor

Phone: 304-525-7851 ext. 2127
Mobile: 304-416-2339
Email: lora.sammons@prestera.org





Cabell County

WEST VIRGINIA SCHOOL-BASED HEALTH CENTER DIRECTORY 2011-2012

Enrollment:

240

Grades:

PK-05

Funding:

- WV Bureau for Behavioral Health (SBMH Block Grant)
- Cabell Co. Board of Education
- Billing

School: Cox Landing Elementary School

6358 Cox Lane

Lesage, WV 25537

Phone: 304-733-3019

Fax: 304-733-3021

School's Webpage: <http://coxlanding.cabe.k12.wv.us/default.htm>

School Mental Health Provider: position open

Phone: 304-525-7851 ext.

Email:

Days & Hours of Operation:

Services Provided:

- Mental health counseling – individual, group and family
- Targeted case management
- Assessment / Treatment planning
- Crisis intervention
- Supportive intervention

Sponsoring Agency: Pretera Center for Mental Health

PO Box 8069

Huntington, WV 25705

Phone: 304-525-7851

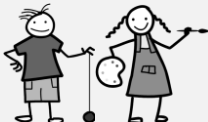
Fax: 304-399-1022

Contact Person: Lora Sammons, West SBMH Supervisor

Phone: 304-525-7851 ext. 2127

Mobile: 304-416-2339

Email: lora.sammons@pretera.org





Cabell County

WEST VIRGINIA SCHOOL-BASED HEALTH CENTER DIRECTORY 2011-2012

Enrollment:

281

Grades:

06-08

Funding:

- WV Bureau for Behavioral Health (SBMH Block Grant)
- Cabell Co. Board of Education
- Billing

School: Enslow Middle School

2613 Collis Ave
Huntington, WV 25702
Phone: 304-528-5121
Fax: 304-528-5097
School's Webpage: <http://boe.cabe.k12.wv.us/ems/>

School Mental Health Provider: Wayne Bennett, Therapist

Phone: 304-528-5283
Email: wayne.bennett@prestera.org

Days & Hours of Operation: Mon – Fri; 7am – 3pm

Services Provided:

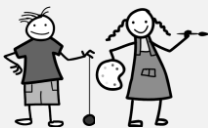
- Mental health counseling – individual, group and family
- Targeted case management
- Assessment / Treatment planning
- Crisis intervention
- Supportive intervention

Sponsoring Agency: Prestera Center for Mental Health

PO Box 8069
Huntington, WV 25705
Phone: 304-525-7851
Fax: 304-399-1022

Contact Person: Lora Sammons, West SBMH Supervisor

Phone: 304-525-7851 ext. 2127
Mobile: 304-416-2339
Email: lora.sammons@prestera.org





Cabell County

WEST VIRGINIA SCHOOL-BASED HEALTH CENTER DIRECTORY 2011-2012

Enrollment:

259

Grades:

K-05

Funding:

- WV Bureau for Behavioral Health (SBMH Block Grant)
- Cabell Co. Board of Education
- Billing

School: Guyandotte Elementary School

607 5th Ave, Guyandotte
Huntington, WV 25702
Phone: 304-528-5128
Fax: 304-528-5151

School's Webpage: <http://boe.cabe.k12.wv.us/guyandot/>

School Mental Health Provider: Emaycoe Jones, Case Manager

Phone: 304-525-5175 ext. 8892
Email: emaycoe.jones@prestera.org

School Mental Health Provider: Kaitlyn Moriarty, Therapist

Phone: 304-525-5175 ext. 8715
Email: kaitlyn.moriarty@prestera.org

Days & Hours of Operation: Mon, Wed, Fri; 7:30am – 3:30pm

Services Provided:

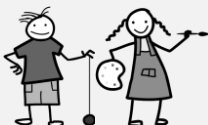
- Mental health counseling – individual, group and family
- Targeted case management
- Assessment / Treatment planning
- Crisis intervention
- Supportive intervention

Sponsoring Agency: Prestera Center for Mental Health

PO Box 8069
Huntington, WV 25705
Phone: 304-525-7851
Fax: 304-399-1022

Contact Person: Lora Sammons, West SBMH Supervisor

Phone: 304-525-7851 ext. 2127
Mobile: 304-416-2339
Email: lora.sammons@prestera.org





Cabell County

WEST VIRGINIA SCHOOL-BASED HEALTH CENTER DIRECTORY 2011-2012

Enrollment:

285

Grades:

PK-05

Funding:

- WV Bureau for Behavioral Health (SBMH Block Grant)
- Cabell Co. Board of Education
- Billing

School: Highlawn Elementary School

2549 1st Avenue

Huntington, WV 25703

Phone: 304-528-5130

Fax: 304-528-5152

School's Webpage: <http://boe.cabe.k12.wv.us/highlawn/homepage.html>

School Mental Health Provider: Mark Salyers, Therapist

Phone: 304-525-5175 ext. 7606

Email: mark.salyers@prester.org

School Mental Health Provider: Emaycoe Jones, Case Manager

Phone: 304-525-5175 ext. 8892

Email: emaycoe.jones@prester.org

Days & Hours of Operation: Wed & Fri; 7:30am – 3:30pm

Services Provided:

- Mental health counseling – individual, group and family
- Targeted case management
- Assessment / Treatment planning
- Crisis intervention
- Supportive intervention

Sponsoring Agency: Pretera Center for Mental Health

PO Box 8069

Huntington, WV 25705

Phone: 304-525-7851

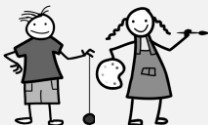
Fax: 304-399-1022

Contact Person: Lora Sammons, West SBMH Supervisor

Phone: 304-525-7851 ext. 2127

Mobile: 304-416-2339

Email: lora.sammons@prester.org





Cabell County

WEST VIRGINIA SCHOOL-BASED HEALTH CENTER DIRECTORY 2011-2012

School Enrollment:

1,589

Grades:

09-12

Co-Sponsors:

Valley Health Systems, Inc.
Prestera Center
Cabell Co. Board of Educ.

Funding:

- WV Bureau for Public Health
- WV Bureau for Behavioral Health
- Dept of Pediatrics at Marshall University
- Cabell County Schools
- Valley Health Systems

School: Huntington High School

1 Highlander Way
Huntington, WV 25701
Phone: 304-528-6400; Fax: 304-528-6422
School's Webpage: <http://hhs.cabe.k12.wv.us/>

Cabell-Midland High Health Center

Address: same as school
Phone: (304) 743-7495 or 743-7331; Fax: (304) 743-6600

Mental Health Center Contact Person:

Lora Sammons, West SBMH Supervisor
Phone: 304-525-7851 ext. 2127
Mobile: 304-416-2339
Email: lora.sammons@prestera.org

| Services Provided | Clinic Schedule | Staff Names/Agency |
|------------------------------|--------------------------------------|--|
| Medical | Monday – Friday 7:30 am – 3:30 | Traci Phillips, CFNP tphillips@valleyhealth.org Patricia Kelly, MD kellyp@marshall.edu |
| Mental Health | Monday – Friday 8:00 am – 4:00 pm | Donna Converse, BA donna.converse@prestera.org |
| Clerical – Care Coordination | Monday – Friday 7:30 am – 3:30 pm | Barbara Watson bwatson@valleyhealth.org |
| Nursing | Monday – Friday 7:30 am – 3:30 pm | Amy Butcher, LPN abutcher@vhs-wv.org |
| Other – Dietitian | One day per month | Jenna Rose, RD huntingtonwic@wvdhhr.org Attn: Jenna |
| Other – Dental | One day per month | Dr. Kara Smith, DDS Donya Hamm, Dental Hygienist |





Cabell County

WEST VIRGINIA SCHOOL-BASED HEALTH CENTER DIRECTORY 2011-2012

Enrollment:

516

Grades:

06-08

Funding:

- WV Bureau for Behavioral Health (SBMH Block Grant)
- Cabell Co. Board of Education
- Billing

School: Huntington Middle School

1001 Jefferson Avenue
Huntington, WV 25704
Phone: 304-528-5180
Fax: 304-528-5215
School's Webpage: None provided

School Mental Health Provider: Lana Stoler, Case Manager

Phone: 304-525-5175 ext. 3798
Email: lana.stoler@prestera.org

School Mental Health Provider: Charles Prince, Therapist

Phone: 304-525-5175 ext. 8755
Email: charles.prince@prestera.org

Days & Hours of Operation: Mon – Fri; 8am – 4pm

Services Provided:

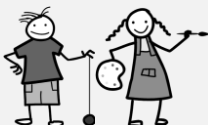
- Mental health counseling – individual, group and family
- Targeted case management
- Assessment / Treatment planning
- Crisis intervention
- Supportive intervention

Sponsoring Agency: Prestera Center for Mental Health

PO Box 8069
Huntington, WV 25705
Phone: 304-525-7851
Fax: 304-399-1022

Contact Person: Lora Sammons, West SBMH Supervisor

Phone: 304-525-7851 ext. 2127
Mobile: 304-416-2339
Email: lora.sammons@prestera.org





Cabell County

WEST VIRGINIA SCHOOL-BASED HEALTH CENTER DIRECTORY 2011-2012

Enrollment:

617

Grades:

06-08

Funding:

- WV Bureau for Behavioral Health (SBMH Block Grant)
- Cabell Co. Board of Education
- Billing

School: Milton Middle School

1 Panther Trail
Milton, WV 25541
Phone: 304-743-7308
Fax: 304-743-7324
School's Webpage: <http://mms.cabe.k12.wv.us>

School Mental Health Provider: Teri Stone, Therapist

Phone: 304-525-5175 ext. 8702
Email: teri.stone@prestera.org

School Mental Health Provider: Lana Stoler, Case Manager

Phone: 304-525-5175 ext. 3798
Email: lana.stoler@prestera.org

Days & Hours of Operation: Mon, Tue, Fri; 8am – 4pm

Services Provided:

- Mental health counseling – individual, group and family
- Targeted case management
- Assessment / Treatment planning
- Crisis intervention
- Supportive intervention

Sponsoring Agency: Prestera Center for Mental Health

PO Box 8069
Huntington, WV 25705
Phone: 304-525-7851
Fax: 304-399-1022

Contact Person: Lora Sammons, West SBMH Supervisor

Phone: 304-525-7851 ext. 2127
Mobile: 304-416-2339
Email: lora.sammons@prestera.org



Cabell County

WEST VIRGINIA SCHOOL-BASED HEALTH CENTER DIRECTORY 2011-2012

Enrollment:

174

Grades:

K-05

Funding:

- WV Bureau for Behavioral Health (SBMH Block Grant)
- Cabell Co. Board of Education
- Billing

School: Peyton Elementary School

199 Rotary Rd
Huntington, WV 25705
Phone: 304-528-5173
Fax: 304-528-5195
School's Webpage: <http://boe.cabe.k12.wv.us/peyton/>

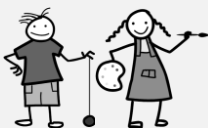
School Mental Health Provider: position open

Sponsoring Agency: Pretera Center for Mental Health

PO Box 8069
Huntington, WV 25705
Phone: 304-525-7851
Fax: 304-399-1022

Contact Person: Lora Sammons, West SBMH Supervisor

Phone: 304-525-7851 ext. 2127
Mobile: 304-416-2339
Email: lora.sammons@pretera.org





Cabell County

WEST VIRGINIA SCHOOL-BASED HEALTH CENTER DIRECTORY 2011-2012

Enrollment:

517

Grades:

PK-05

Funding:

- WV Bureau for Behavioral Health (SBMH Block Grant)
- Cabell Co. Board of Education
- Billing

School: Spring Hill Elementary School

1901 Hall Avenue
Huntington, WV 25701
Phone: 304-528-5175
Fax: 304-528-5177

School's Webpage: <http://boe.cabe.k12.wv.us/springhi/>

School Mental Health Provider: Kaitlyn Moriarty, Therapist

Phone: 304-525-5175 ext. 8892
Email: kaitlyn.moriarty@prestera.org

School Mental Health Provider: Emaycoe Jones, Case Manager

Phone: 304-525-5175 ext. 8892
Email: emaycoe.jones@prestera.org

Days & Hours of Operation: Tues, Thurs; 7:30am – 3:30pm

Services Provided:

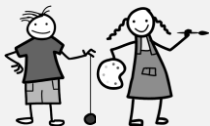
- Mental health counseling – individual, group and family
- Targeted case management
- Assessment / Treatment planning
- Crisis intervention
- Supportive intervention

Sponsoring Agency: Prestera Center for Mental Health

PO Box 8069
Huntington, WV 25705
Phone: 304-525-7851
Fax: 304-399-1022

Contact Person: Lora Sammons, West SBMH Supervisor

Phone: 304-525-7851 ext. 2127
Mobile: 304-416-2339
Email: lora.sammons@prestera.org





Calhoun County

WEST VIRGINIA SCHOOL-BASED HEALTH CENTER DIRECTORY 2011-2012

Enrollment:

215

Grades:

PK-04

Sponsoring Agency:

Minnie Hamilton Health System

Funding:

- WV Bureau for Public Health
- WV Bureau for Behavioral Health (SBMH Block Grant)
- WV Bureau for Behavioral Health (ESMH Planning Grant)

School: Arnoldsburg Elementary School

Post Office Box 159
 Arnoldsburg, WV 25234
 Phone: 304-655-8616
 Fax: 304-655-8616
 School's Webpage: <http://arnoldsburg.calh.k12.wv.us>

School Health Center: Arnoldsburg Elementary Wellness Center

90 Spring Run Road
 Arnoldsburg, WV 25234
 Phone: 304-655-7209

School Health Center Contact Person: Stacy Starcher
 Phone: 304-354-6851; Fax: 304-354-9126
 Email: starcher@mhhcc.com

School Mental Health Contact Person: Tracy Snodgrass
 Phone: 304 354-9244; Email: tsnodgrass@mhhcc.com

| Services Provided | Clinic Schedule | Staff Names/Agency |
|------------------------------|--|--|
| Medical | Tuesday & Thursday 12:00 pm – 4:00 pm | Lisa Coleman, FNP lcoleman@mhhcc.com |
| Mental Health | Tuesday 8:00 am – 4:00pm | Shalee Nottingham, LPC snottingham@mhhcc.com |
| Clerical – Care Coordination | Monday – Friday 8:00 am – 4:00 pm | Stacie Starcher starcher@mhhcc.com |
| Nursing | Tuesday & Thursday 12:00 pm – 4:00 pm | Paula King, MA pking@mhhcc.com |





Calhoun County

WEST VIRGINIA SCHOOL-BASED HEALTH CENTER DIRECTORY 2011-2012

Enrollment:

649

Grades:

05-12

Sponsoring Agency:

Minnie Hamilton Health System

Funding:

- WV Bureau for Public Health
- WV Bureau for Behavioral Health (SBMH Block Grant)
- WV Bureau for Behavioral Health (ESMH Planning Grant)

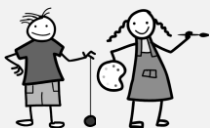
School: Calhoun Middle/High School

50 Underwood Circle
 Mt. Zion, WV 26151
 Phone: 304-354-6148; Fax: 304-354-7382
 School's Webpage: <http://ccmhs.calh.k12.wv.us/default.htm>

School Health Center: Calhoun County Middle/High School Wellness Center

HC 89 Box 118
 Mt. Zion, WV 26151
 Phone: 304-354-6815; Fax: 354-9126
School Health Center Contact Person: Stacy Starcher
 Phone: 304-354-6851; Email: stargcher@mhcc.com
School Mental Health Contact Person: Tracy Snodgrass
 Phone: 304 354-9244; Email: tsnodgrass@mhcc.com

| Services Provided | Clinic Schedule | Staff Names/Agency |
|------------------------------|---|--|
| Medical | Monday & Friday 8:00 am – 4:00 pm Tuesday 8:00 am – 12:00 pm Wednesday & Thursday 12:00 pm – 4:00 pm | Lisa Coleman, FNP lcoleman@mhcc.com |
| Mental Health | Monday - Friday 7:30 am – 4:00 pm | Shalee Nottingham, LPC snottingham@mhcc.com |
| Clerical – Care Coordination | Same as Medical | Stacie Starcher sstarcher@mhcc.com |
| Nursing | Same as Medical | Paula King, MA pking@mhcc.com Nina Smith, RN nsmith@mhcc.com |
| Other – Dental | Every other Wednesday 8:30 am – 11:30 am | Lynn Gilbert, DDS lgilbert@mhcc.com |





Calhoun County

WEST VIRGINIA SCHOOL-BASED HEALTH CENTER DIRECTORY 2011-2012

Enrollment:

240

Grades:

PK-04

Sponsoring Agency:

Minnie Hamilton Health System

Funding:

- WV Bureau for Public Health
- WV Bureau for Behavioral Health (SBMH Block Grant)
- WV Bureau for Behavioral Health (ESMH Planning Grant)

School: Pleasant Hill School

3254 N Calhoun Hwy
 Grantsville, WV 26147-7012
 Phone: 304-354-6022
 Fax: 304-354-6070
 School's Webpage: <http://pleasanthill.calh.k12.wv.us>

School Health Center: Pleasant Hill Elementary Wellness Center

HC 68 Box 2
 Grantsville, WV 26147
 Phone: 304-354-6022 Fax: 304-354-9126

School Health Center Contact Person: Stacy Starcher

Phone: 304-354-6851; Fax: 304-354-9126

Email: sstarcher@mhcc.com

School Mental Health Contact Person: Tracy Snodgrass

Phone: 304 354-9244; Email: tsnodgrass@mhcc.com

| Services Provided | Clinic Schedule | Staff Names/Agency |
|------------------------------|--|--|
| Medical | Wednesday & Thursday 8:00 am – 11:30 am | Lisa Coleman, FNP lcoleman@mhcc.com |
| Mental Health | Thursday 8:00 am – 4:00 pm | Shalee Nottingham, LPC snpttingham@mhcc.com |
| Clerical – Care Coordination | Monday – Friday 8:00 am – 4:00 pm | Stacie Starcher sstarcher@mhcc.com |
| Nursing | Monday – Friday 8:00 am – 4:00 pm | Paula King, MA pking@mhcc.com Nina Smith, RN smith@mhcc.com |





Fayette County

WEST VIRGINIA SCHOOL-BASED HEALTH CENTER DIRECTORY 2011-2012

School Served:

Mt. Hope High School

Enrollment:

302

Grades:

5-12

Starting Date:

January 1994

Funding:

- WV Bureau for Public Health
- Sisters of St. Joseph Health & Wellness Foundation
- United Way of Southern WV



Mt. Hope High School-Based Health Center

110 High School Street
 Mt. Hope, WV 25880
 Phone: (304) 877-3124
 Fax: (304) 877-2033

Contact Person: Teri Harlan

Phone: (304) 465-1378
 Fax: (304) 469-2981
 Email: teri.harlan@pihn.org

Sponsoring Agency: New River Health Association, Inc.

57 Sutphin Lane
 Scarbro, WV 25917
 Executive Director: Dave Sotak
 Phone: (304) 929-6772
 Email: dave.sotak@pihn.org

| Services Provided | Clinic Schedule | Staff Names/Agency |
|------------------------------|--|--|
| Medical | Tuesday & Thursday 8:00 am – 3:30 pm | Joni Walker, PA-C joni.walker@pihn.org |
| Mental Health | Tuesday & Thursday 8:00 am – 3:00 am | Mary Powell, LICSW mary.powell@pihn.org |
| Clerical – Care Coordination | Same as Medical | Carol Legg Carol.legg@pihn.org |
| Nursing | Tuesday & Thursday 8:00 am – 11:00 am | Donna Conelly, LPN donna.conelly@pihn.org |
| Other – Dental | Varies | Ashley Logan, RDH ashley.logan@pihn.org |
| Health Educator | Varies by school | Rosalie McCauley rosalie.mccauley@pihn.org High School office: 877-3124 |



Fayette County

WEST VIRGINIA SCHOOL-BASED HEALTH CENTER DIRECTORY 2011-2012

School Served:

Oak Hill High School

Enrollment:

771

Grades:

9-12

Starting Date:

February 2002

Funding:

WV Bureau for Public Health

Oak Hill High School-Based Health Center

350 West Oylar Avenue
 Oak Hill, WV 25901
 Phone: (304) 469-6331
 Fax: (304) 469-6332

Contact Person: Teri Harlan

Phone: (304) 465-1378
 Fax: (304) 469-2981
 Email: teri.harlan@pihn.org

Sponsoring Agency: New River Health Association, Inc.

57 Sutphin Lane
 Scarbro, WV 25917
 Executive Director: Dave Sotak
 Phone: (304) 929-6772
 Email: dave.sotak@pihn.org

| Services Provided | Clinic Schedule | Staff Names/Agency |
|------------------------------|--------------------------------------|---|
| Medical | Monday – Friday 8:00 am – 3:30 pm | Melody Hale, FNP-BC melody.hale@pihn.org |
| Mental Health | Monday – Friday 8:00 am – 3:00 pm | |
| Clerical – Care Coordination | Monday – Friday 7:30 am – 3:30 pm | Lisa Sullivan lisa.sullivan@pihn.org |
| Nursing | Monday – Friday 8:00 am – 3:00 pm | Jeanne Black, RN, BSN jeanne.black@pihn.org |
| Other – Dental | Varies | Ashley Logan, RDH ashley.logan@pihn.org |





Fayette County

WEST VIRGINIA SCHOOL-BASED HEALTH CENTER DIRECTORY 2011-2012

School Served:

Collins Middle School

Enrollment:

720

Grades:

5-8

Starting Date:

August 1996

Funding:

- WV Bureau for Public Health
- Federal Bureau for Primary Health Care

Collins Middle School-Based Health Center

601 Jones Avenue
 Oak Hill, WV 25901
 Phone: (304) 469-4875 or 469-4981
 Fax: (304) 469-8036

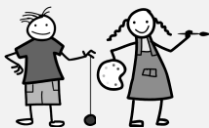
Contact Person: Teri Harlan

Phone: (304) 465-1378
 Fax: (304) 469-2981
 Email: teri.harlan@pihn.org

Sponsoring Agency: New River Health Association, Inc.

57 Sutphin Lane
 Scarbro, WV 25917

| Services Provided | Clinic Schedule | Staff Names/Agency |
|------------------------------|--|--|
| Medical | Monday – Friday 8:00 am – 3:30 pm | Kara Gillespie, PA-C kara.gillespie@pihn.org |
| Mental Health | Monday & Thursday 8:00 am – 3:00 pm | James Powell, LICSW james.powell@pihn.org |
| Clerical – Care Coordination | Monday – Friday 7:30 am – 3:30 pm | Jessica Davis, Medical Assistant jessica.davis@pihn.org |
| Nursing | Monday – Friday 8:00 am – 3:30 pm | Frances Surbaugh, LPN frances.surbaugh@pihn.org |
| Other – Dental | Varies | Ashley Logan, RDH ashley.logan@pihn.org |





Fayette County

WEST VIRGINIA SCHOOL-BASED HEALTH CENTER DIRECTORY 2011-2012

Enrollment:

MBES 170

MBHS 232

Grades:

MBES PK-6

MBHS 7-12

Starting Date:

MBES October 1997

MBHS March 1998

Funding:

- WV Bureau for Public Health
- WV Bureau for Behavioral Health
- Health
- Sisters of St. Joseph Health & Wellness Foundation

Schools:

Meadow Bridge Elementary

2725 Main Street
Meadow Bridge, WV 25976
Phone: 304-484-7914

Meadow Bridge High School

2775 Main Street
Meadow Bridge, WV 25976
Phone: 304-484-7917

Wildcat Wellness Center

874 Meadow Bridge Road
Meadow Bridge, WV 25976
Phone: (304) 484-7571; Fax: (304) 484-7571

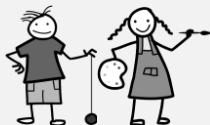
Contact Person: Judy Koehler

Phone: (304) 438-6188, ext. 1020
Fax: (304) 438-5762
Email: jkoehler@rmchealth.org

Sponsoring Agency: Rainelle Medical Center, Inc.

645 Kanawha Avenue
Rainelle, WV 25962

| Services Provided | Clinic Schedule | Staff Names/Agency |
|------------------------------|---|---|
| Medical | Wednesday 7:30 am – 3:30 pm Friday 7:30am – 12:00pm | Makisha Ramsey, PA-C |
| Mental Health | Monday – Thursday 8:00 am – 4:00 pm | Kay McCoy, LCSW Krmit_1999@yahoo.com |
| Clerical – Care Coordination | Wednesday & Friday 7:00 am – 3:30 pm | Sue Stickler, Medical Assistant Sues0102@yahoo.com |
| Nursing | Wednesday 7:30 am – 3:30 pm Friday 7:30 am – 12:00pm | Christine Puffenbarger, LPN |





Greenbrier County

WEST VIRGINIA SCHOOL-BASED HEALTH CENTER DIRECTORY 2011-2012

School Served:

Eastern Greenbrier
Middle School

Eastern Greenbrier Middle School Wellness Center

Route 1 Box 150
Ronceverte, WV 24970
School Phone: 304-647-6498 School Fax: 304-647-3087
School's Webpage: <http://boe.gree.k12.wv.us/egms/index.html>
SBHC Phone: (304) 484-7571; SBHC Fax: (304) 484-7571

Enrollment:

811

Sponsoring Agency: Rainelle Medical Center

645 Kanawha Avenue
Rainelle, WV 25962
Phone: 304-438-6188 Fax: 304-438-6819

Grades:

06-08

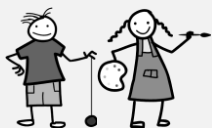
Contact Person: Judy Koehler, Director of School Based Health

Phone: 304-257-1115
Email: jkoehler@rmchealth.org

Funding:

WV Bureau for Behavioral
Health (ESMH Planning
Grant)

| Services Provided | Clinic Schedule | Staff Names/Agency |
|---------------------------------|--|--|
| Medical | Monday – Friday 8:00 am – 4:00 pm | Jaclyn Adkins, PA-C jadkins@rmchealth.org |
| Mental Health | Monday – Thursday 8:00 am – 4:00 pm | Ruth Riffe, LICSW, ADC rriffe@rmchealth.org |
| Clerical – Care Coordination | Monday – Friday 8:00 am – 4:00 pm | Charlotte Holliday cholliday@rmchealth.org |
| Nursing | Monday – Friday 8:00 am – 4:00 pm | Amanda Bryant, GPN abryant@rmchealth.org |
| Other | | |





Greenbrier County

WEST VIRGINIA SCHOOL-BASED HEALTH CENTER DIRECTORY 2011-2012

School Served:

Western Greenbrier
Middle School

Western Greenbrier Middle School Wellness Center

HC 40 Box 14
Crawley, WV 24931
School Phone: 304-392-6446; School Fax: 304-392-6785
School's Webpage: <http://boe.gree.k12.wv.us/wgms/index.html>
SBHC Phone: 304-392-6446, ext. 2306; SBHC Fax: 354-9126

Enrollment:

319

School Mental Health Contact Person:

Judy Koehler
Phone: (304) 438-6188, ext 1020; Fax: (304) 438-5762
Email: jkoehler@rmchealth.org

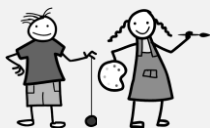
Grades:

06-08

Funding:

- WV Bureau for Public Health
- WV Bureau for Behavioral Health
- Sisters of St. Joseph Health & Wellness Foundation

| Services Provided | Clinic Schedule | Staff Names/Agency |
|------------------------------|--|---|
| Medical | Tuesday 7:30 am – 3:30 pm Thursday 12:00 pm 4:00 pm | Vicki Gallaher, FNP-BC vgallaher@rmchealth.org |
| Mental Health | Monday – Thursday 8:00 am – 4:00 pm Friday as scheduled | Linda Neal, LICSW lneal@rmchealth.org |
| Clerical – Care Coordination | Tuesday 7:30 am – 3:30 pm Thursday 12:00pm – 4:00pm | Sue Stickler, Medical Assistant sstickler@rmchealth.org |
| Nursing | Tuesday 7:30 am – 3:00 pm Thursday 12:00 pm – 3:30 pm | Christine Puffenbarger, LPN cpuffenbarger@rmchealth.org |





Greenbrier County

WEST VIRGINIA SCHOOL-BASED HEALTH CENTER DIRECTORY 2011-2012

Enrollment:

811

Grades:

06-08

Funding:

- WV Bureau for Public Health
- WV Bureau for Behavioral Health
- Sisters of St. Joseph Health & Wellness Foundation

School: Greenbrier West High School

Po Box 325
 Charmco, WV 25958
 Phone: 304-438-6191; Fax: 304-438-9189
 School's Webpage: <http://boe.gree.k12.wv.us/gwhs/index.html>

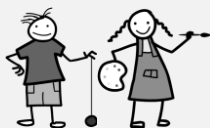
School Health Center: Greenbrier West High School Wellness Center

Address: same as school
 Phone: 304-438-7893; Fax: 304-438-5762

School Health Center / School Mental Health Contact Person:

Judy Koehler
 Phone: (304) 438-6188, ext 1020; Fax: (304) 438-5762
 Email: jkoehler@rmchealth.org

| Services Provided | Clinic Schedule | Staff Names/Agency |
|------------------------------|---|---|
| Medical | Monday 8:00 am – 4:00 pm Thursday 8:00 am – 12:00 pm | Vicki Gallaher, FNP-BC vgallaher@rmchealth.org |
| Mental Health | Monday – Thursday 8:00 am – 4:00 pm Friday as scheduled | Kay McCoy, ICSW kmccoy@rmchealth.org |
| Clerical – Care Coordination | Monday 7:30 am – 3:30 pm Thursday 8:00 am – 12:00 pm | Sue Stickler, Medical Assistant sstickler@rmchealth.org |
| Nursing | Monday 7:30 am – 3:30 pm Thursday 8:00 am – 12:00 pm | Christine Puffenbarger, LPN cpuffenbarger@rmchealth.org |





Hardy County

WEST VIRGINIA SCHOOL-BASED HEALTH CENTER DIRECTORY 2011-2012

Enrollment:

EHEM 534

EHHS 234

Grades:

EHEMS PK-8

EHHS 9-12

Starting Date:

April 1993

Funding:

- WV Bureau for Public Health
- Sisters of St. Joseph Health & Wellness Foundation

Schools:

East Hardy Early/Middle

P. O. Box 260 238 Cougar Drive
Baker, WV 26801-0260
Phone: 304-897-5970

East Hardy High

P. O. Box 120 259 Cougar Drive
Baker, WV 26801-0120
Phone: 304-897-5948

East Hardy School-Based Health Center

P.O. Box 260
Baker, WV 26801
Phone: (304) 897-7108
Fax: (304) 897-6653

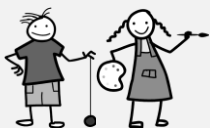
Contact Person: Carol Whetzel

Phone: (304) 897-5915, ext. 233
Email: cwhetzel@hawsehealth.com

Sponsoring Agency: E. A. Hawse Health Center

Rt. 55 & 259
P.O. Box 97
Baker, WV 26801

| Services Provided | Clinic Schedule | Staff Names/Agency |
|------------------------------|---|---|
| Medical | Monday – Friday 8:00 am – 10:30 am | Andy Howlett, PA-C |
| Mental Health | Mon, Tues, Thurs, Friday 8:30 am – 12:00 pm Wed - Alternative School 9:00 am – 3:00 pm | Ken Powers, LICSW (both schools) kpowers@hawsehealth.com Patty Parris, LCSW, BSN, MSW pparris@hawsehealth.com (only alternative school) |
| Clerical – Care Coordination | Monday – Friday 8:00 am – 4:30 pm | Teresa Halterman SBH@hawsehealth.com Phone: 897-5915, ext. 237 |
| Nursing | Monday – Friday 1:00 pm – 3:00 pm | EAHHC Medical Assistant |





Hardy County

WEST VIRGINIA SCHOOL-BASED HEALTH CENTER DIRECTORY 2011-2012

Enrollment:

MES 471

MHS 407

Grades:

MES PK - 2, Special

Education

MHS 9-12

Starting Date:

MES October 1995

MHS 1999

Funding:

- WV Bureau for Public Health
- Sisters of St. Joseph Health & Wellness Foundation

Schools:

Moorefield Elementary

400 North Main Street
Moorefield, WV 26836-1015
Phone: 304-530-6356

Moorefield High

401 North Main Street
Moorefield, WV 26836-1098
Phone: 304-530-6034

Moorefield Elementary School-Based Health Center

400 North Main Street
Moorefield, WV 26836
Phone: (304) 538-2924
Fax: (304) 530-6356

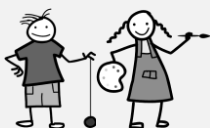
Contact Person: Carol Whetzel

Phone: (304) 897-5915, ext. 233
Email: cwhetzel@hawsehealth.com

Sponsoring Agency: E. A. Hawse Health Center

Rt. 55 & 259; P.O. Box 97
Baker, WV 26801

| Services Provided | Clinic Schedule | Staff Names/Agency |
|------------------------------|--|---|
| Medical | Monday – Friday 8:00 am – 10:15 am | Amy Kump, PA-C |
| Mental Health | Monday – Friday (available at HHC) 3:00 pm – 5:00 pm | Ken Powers, LICSW kpowers@hawsehealth.com |
| Clerical – Care Coordination | Monday – Friday 8:00 am – 4:30 pm | Teresa Halterman SBH@hawsehealth.com Phone: 897-5915, ext. 237 |
| Nursing | Monday – Friday 8:00 am – 10:15 am | EAHHC Medical Assistant |





Kanawha County

WEST VIRGINIA SCHOOL-BASED HEALTH CENTER DIRECTORY 2011-2012

School:

Riverside High School

Enrollment:

1,244

Grades:

9-12

Starting Date:

February 2001

Funding:

- WV Bureau for Public Health
- Sisters of St. Joseph Health & Wellness Foundation

Riverside Health Center

#1 Warrior Way, Suite 103
Belle, WV 25015
Phone: 304-949-3591 Fax: 304-949-3791

Contact Persons: Pam Price, CFNP

Phone: (304) 949-3591 Fax: (304) 949-3791
Email: pprice@cchcwv.com

Sponsoring Agency: Cabin Creek Health System

PO Box 70, Rt. 79
Dawes, WV 25054

| Services Provided | Clinic Schedule | Staff Names/Agency |
|--|--|--|
| Medical | Monday – Friday 7:30 am – 5:00 pm | Mary Grandon, PA-C, Jill Fields, PA-C, Stephen Sondike, MD Melissa Gamponia, MD |
| Mental Health | Mon, Wed, & Thur 7:30 am – 4:00 pm Friday 7:30 am – 5:00 pm | Sam Farley, MSW farleysam@hotmail.com Julie Tackett, MSW |
| Clerical – Care Coordination | Monday – Friday 7:30 am – 5:00 pm | Misty Wilson, MA mwilson@cchcwv.com Tammy Phillips tphillips@cchcwv.com |
| Nursing | Monday – Friday 7:30 am – 5:00 pm | Angie Hess, NRCMA ahess@cchcwv.com Misty Wilson, MA, Julie Johnson, MA Tammy Phillips, MA Tracy Curry, MA, Stacy Norris, CMA, Debbie Connard, LPN |
| Other - SBHC Health Outreach Coordinator | Monday – Thursday 8:30 am – 5:00 pm | Elisha Adkins, MA eadkins@cchcwv.com |





Kanawha County

OCTOBER 21, 2011

WEST VIRGINIA SCHOOL-BASED HEALTH CENTER DIRECTORY 2010-2011

School Served:

East Bank Middle School

Enrollment:

437

Grades:

6-8

Starting Date:

2008

Funding:

Cabin Creek Health Systems

Pioneer Health Center

P.O. Box 897
East Bank, WV 25067
Phone: (304) 595-5068 Fax: (304) 595-7900

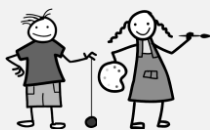
Contact Persons: Mary Grandon, PA-C

Phone: (304) 595-5068 Fax: (304) 595-7900
Email: mgrandon@cchcwv.com

Sponsoring Agency: Cabin Creek Health System

PO Box 70, Rt. 79
Dawes, WV 25054
Executive Director: Craig Robinson
Phone: (304) 734-2040 Fax: (304) 734-2047
Email: crobinson@cchcwv.com
Medical Director: Chad Turner, MD

| Services Provided | Clinic Schedule | Staff Names/Agency |
|---------------------------------|---|---|
| Medical | Wednesday & Friday 8:00 am – 4:00 pm | Mary Grandon, PA-C mgrandon@cchcwv.com |
| Mental Health | Wednesday & Friday 8:00 am – 4:00 pm | Sam Farley, MSW |
| Clerical – Care Coordination | Wednesday & Friday 8:00 am – 4:00 pm | Elisha Adkins, MA eadkins@cchcwv.com Kari McCormick |
| Nursing | Wednesday & Friday 8:00 am – 4:00 pm | Elisha Adkins, MA |
| Other | | |





Kanawha County

OCTOBER 21, 2011

WEST VIRGINIA SCHOOL-BASED HEALTH CENTER DIRECTORY 2010-2011

School Served:

Sissonville High School

Enrollment:

623

Grades:

9-12

Starting Date:

January 2009

Funding:

WV Bureau for Public Health

Sisters of St. Joseph Health

& Wellness Foundation

Indian Health Center

6100 Sissonville Drive

Sissonville, WV 25320

Phone: (304) 984-1361 Fax: (304) 984-0362

Contact Persons: Jill Fields, PA-C

Phone: (304) 984-1361 Fax: (304) 984-0362

Email: jfields@cchcwv.com

Sponsoring Agency: Cabin Creek Health System

PO Box 70, Rt. 79

Dawes, WV 25054

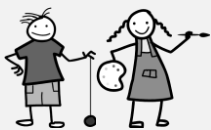
Executive Director: Craig Robinson

Phone: (304) 734-2040 Fax: (304) 734-2047

Email: crobinson@cchcwv.com

Medical Director: Chad Turner, MD

| Services Provided | Clinic Schedule | Staff Names/Agency |
|---------------------------------|--|---------------------|
| Medical | Monday & Friday 7:00 am – 3:00 pm Tuesday & Thursday 7:00 am – 12:00 pm | Jill Fields, PA-C |
| Mental Health | Monday & Friday 7:00 am – 3:00 pm | Julie Tackett, LGSW |
| Clerical – Care Coordination | | Kim Boggess, MA |
| Nursing | | Kim Boggess, MA |
| Other | | |





Kanawha County

WEST VIRGINIA SCHOOL-BASED HEALTH CENTER DIRECTORY 2011-2012

Enrollment:

497

Grades:

06-08

Funding:

WV Bureau for Behavioral
Health (ESMH Planning
Grant)

School: Stonewall Jackson Middle School

812 Park Avenue
Charleston, WV 25302
Phone: 304-348-6123
Fax: 304-348-1999
School's Webpage: None provided

School Mental Health Provider:

This position is open because this program is in the planning stages.

Sponsoring Agency: Pretera Center for Mental Health

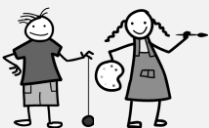
511 Morris Street
Charleston, WV 25301
Phone: 304-341-0511
Fax: 304-345-8163

Contact Person: Jenni Durham, School Based Services Supervisor, East

Phone: 304-721-7713
Email: jenni.durham@pretera.org

Executive Director: Robert Hanson, CEO

Phone: (304) 525-7851





Lincoln County

WEST VIRGINIA SCHOOL-BASED HEALTH CENTER DIRECTORY 2011-2012

Enrollment:

893

Grades:

9-12

Starting Date:

August 2006

Funding:

Lincoln Primary Care Center

School: Lincoln County High School

81 Lincoln Panther Way
Hamlin, WV 25523
Phone: 304-824-6000

Panther Center for Health

Address: same as above
Phone: 304-824-6090; Fax: 304-824-6094

Contact Person: Brian Crist, Andi Byrd & Kelly McMinn

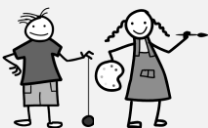
Phone: (304) 824-5806, ext. 360
Fax: (304) 824-5885

Email: bcrist@lincolnprimarycare.com
abyrd@lincolnprimarycare.com
kcmcinn@lincolnprimarycare.com

Sponsoring Agency: Lincoln Primary Care Center

7400 Lynn Avenue
Hamlin, WV 25523

| Services Provided | Clinic Schedule | Staff Names/Agency |
|------------------------------|--|--|
| Medical | Monday – Friday 8:30 am – 4:30 pm | Kelly McMinn, FNP-BC |
| Mental Health | Monday - Friday 8:30 am – 4:30 pm | Tiffany Smith |
| Clerical – Care Coordination | Monday – Friday 8:00 am – 5:00 pm (Off-site) | Paula Adkins, MA |
| Nursing | Monday – Friday 8:30 am – 4:30 pm | Paula Adkins, MA (job share) |
| Other – Dental | Monday – Friday 8:00 am – 4:00 pm | Dr. Steve Beckett, DDS Wendy Mosteller, RDH |





Marion County

WEST VIRGINIA SCHOOL-BASED HEALTH CENTER DIRECTORY 2011-2012

Enrollment:

811

Grades:

9-12

Starting Date:

January 1995

Funding:

WV Bureau for Public Health

Division of Primary Care

School: East Fairmont High School

1993 Airport Road
 Fairmont, WV 26554-9138
 Phone: 304-367-2140; Fax: 304-367-2180

East Fairmont High School Wellness Center

P.O. Box 1112
 Fairmont, WV 26554
 Phone: 304-367-0654; Fax: 304-366-9529

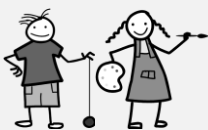
Contact Person: Eric Pulice & Michelle Ferris

Phone: Eric Pulice:(304) 367-8752 Michelle Ferris: (304) 367-8717
 Fax: (304) 366-9529
 Email: epulic@mvahealth.org ; mferr@mvahealth.org

Sponsoring Agency: Monongahela Valley Association of Health Centers, Inc.

1322 Locust Avenue, P.O. Box 1112
 Fairmont, WV 26555-1112

| Services Provided | Clinic Schedule | Staff Names/Agency |
|------------------------------|--|---------------------------|
| Medical | Monday, Wednesday & every other Friday 8:00 am – 12:00 noon | Patricia Parrish, PA-C |
| Mental Health | Tuesday and Friday 8:00 am – 12:00 noon | Valley HealthCare Systems |
| Clerical – Care Coordination | Monday – Friday 8:00 am – 12:00 noon | Mary Painter, RN |
| Nursing | Monday – Friday 8:00 am – 12:00 noon | Mary Painter, RN |





Marion County

WEST VIRGINIA SCHOOL-BASED HEALTH CENTER DIRECTORY 2011-2012

Enrollment:

813

Grades:

9-12

Starting Date:

December 1995

Funding:

WV Bureau for Public Health

Division of Primary Care

School: North Marion High School

1 North Marion Drive
 Farmington, WV 26571-3086
 Phone: 304-986-3063; Fax: 304-986-3086

North Marion High School Wellness Center

P.O. Box 1112
 Fairmont, WV 26554
 Phone: 304-986-2550; Fax: 304-366-9529

Contact Person: Eric Pulice & Michelle Ferris

Eric Pulice: 304-367-8752; epuli@mvahealth.org
 Michelle Ferris: 304-367-8717; mferr@mvahealth.org

Sponsoring Agency: Monongahela Valley Association of Health Centers, Inc.

1322 Locust Avenue, P.O. Box 1112
 Fairmont, WV 26555-1112

| Services Provided | Clinic Schedule | Staff Names/Agency |
|------------------------------|--|---------------------------|
| Medical | Tuesday, Thursday & every other Friday 8:00 am – 12:00 noon | Patricia Parrish, PA-C |
| Mental Health | Monday, Wednesday & Thursday 8:00 am – 12:00 noon | Valley HealthCare Systems |
| Clerical – Care Coordination | Monday – Friday 8:00 am – 12:00 noon | Kathy Hall, RN |
| Nursing | Monday – Friday 8:00 am – 12:00 noon | Kathy Hall, RN |





McDowell County

WEST VIRGINIA SCHOOL-BASED HEALTH CENTER DIRECTORY 2011-2012

Enrollment:

795

Grades:

6-12

Starting Date:

August 2005

Funding:

- WV Bureau for Public Health
- Sisters of St. Joseph Health
- & Wellness Foundation

Additional Schools

Receiving Services:

Big Creek High School (9-12)

Enrollment 241

Iaeger High School (9-12)

Enrollment 433

School: Mount View High School

960 Mount View Road
Welch, WV 24801
Phone: 304-436-2939; Fax: 304-436-4714

Tug River/Mount View Health Center

950 Mount View Road, Suite 500
Welch, WV 24801
Phone: 304-436-4798; Fax: 304-436-4815

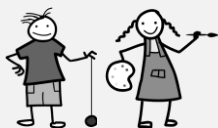
Contact Person: Tim Crofton

Phone: 304-448-2101 ext. 251 and 436-4799
Fax: 304-436-4815
Email: timcrofton@excite.com

Sponsoring Agency: Tug River Health Association, Inc.

P.O. Box 507
Gary, WV 24836

| Services Provided | Clinic Schedule | Staff Names/Agency |
|---------------------------------|--|---|
| Medical | Monday – Friday 8:00 am – 5:00 pm | Lavetta Hutchinson, C-FNP lhutchinsonmv@gmail.com |
| Mental Health | Every third Wednesday with Video follow-up every two weeks | Kenneth Devlin, MA, LSW devlin1@marshall.edu |
| Clerical – Care Coordination | Monday – Friday 8:00 am – 5:00 pm | TBA |
| Nursing | Monday – Friday 8:00 am – 5:00 pm | Monica Baker, LPN |





Mercer County

WEST VIRGINIA SCHOOL-BASED HEALTH CENTER DIRECTORY 2011-2012

Enrollment:

317

Grades:

03-05

Funding:

WV Bureau for Behavioral
Health (ESMH Planning
Grant)

School: Mercer Elementary School

1200 Mercer Street
Princeton, WV 24740
Phone: 304-425-3160
Fax: 304-487-3617

School Mental Health Provider:

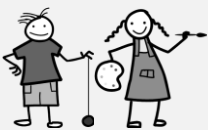
This position is open because this program is in the planning stages.

Sponsoring Agency: Southern Highlands, Inc.

200-12th St. Extension
Princeton, WV 24740
Phone: 304-425-9541

Contact Person: Sonnee Stanley, Children's Liasion

Phone: 304-425-9541 ext.315
Email: sonneestanley@shcmhc.com





Nicholas County

WEST VIRGINIA SCHOOL-BASED HEALTH CENTER DIRECTORY 2011-2012

Enrollment:

RMS 314

RHS 409

Grades:

RMS 6-8

RHS 9-12

Starting Date:

March 1995

Funding:

Federal Bureau of Primary

Health Care

Schools:

Richwood Middle School

2 Valley Avenue

Richwood, WV 26261

Phone: 304-846-2638

Fax: 304-846-2684

Richwood High School

1 Valley Ave.

Richwood, WV 26261

Phone: 304-846-2591

Fax: 304-846-2684

Richwood Wellness Center

2 Valley Avenue

Richwood, WV 26261

Phone: 304-846-2211; Fax: 304-846-2213

Contact Person: Teri Harlan

Phone: 304-465-1378; Fax: 304-469-2981

Email: teri.harlan@pihn.org

Sponsoring Agency: New River Health Association, Inc.

Rt. 2, Box 615 A

Scarbro, WV 25917

| Services Provided | Clinic Schedule | Staff Names/Agency |
|---------------------------------|--|--|
| Medical | Monday – Friday 8:00 am – 3:30 pm | Angela Barker, PA-C angela.barker@pihn.org |
| Mental Health | Tuesday & Wednesday 8:00 am – 3:00 pm | James Powell, LICSW james.powell@pihn.org |
| Clerical – Care Coordination | Monday – Friday 7:30 am – 3:30 pm | Pam Painter pamela.painter@pihn.org |
| Nursing | Monday – Friday 8:00 am – 3:30 pm | Nikki Underwood, LPN nikki.underwood@pihn.org |
| Other – Dental | Varies | Ashley Logan, RDH ashley.logan@pihn.org |





Nicholas County

WEST VIRGINIA SCHOOL-BASED HEALTH CENTER DIRECTORY 2011-2012

Enrollment:

SMS 569

NCHS 792

Grades:

SMS 6-8

NCHS 9-12

Starting Date:

September 2000

Funding:

- WV Bureau for Public Health
Sisters of St. Joseph Health
- & Wellness Foundation

Schools:

Summersville Middle School

40 Grizzly Rd
Summersville, WV 26651
Phone: 304-872-5092
Fax : 304-872-6314

Nicholas County High School

30 Grizzly Rd
Summersville, WV 26651
Phone: 304-872-2141
Fax : 304-872-3026

Summersville Wellness Center

c/o Nicholas County High School
30 Grizzly Road
Summersville, WV 26651
Phone: 304-883-3900; Fax: 304-872-3190

Contact Person: Teri Harlan

Phone: 304-465-1378; Fax: 304-469-2981
Email: teri.harlan@pihn.org

Sponsoring Agency: New River Health Association, Inc.

Rt. 2, Box 615 A
Scarbro, WV 25917

| Services Provided | Clinic Schedule | Staff Names/Agency |
|------------------------------|---------------------------------------|---|
| Medical | Monday – Friday 8:00 am – 4:00 pm | Joy Woods, PA-C joy.woods@pihn.org |
| Mental Health | Tuesday & Friday 8:00 am – 3:00 pm | Scott Thompson, LPC scott.thompson@pihn.org |
| Clerical – Care Coordination | Monday – Friday 8:00 am – 4:00 pm | Betsy Martin betsy.martin@pihn.org |
| Nursing | Monday – Friday 8:00 am – 4:00 pm | Terry Vogel, LPN terry.vogel@pihn.org |
| Other – Dental | Varies | Ashley Logan, RDH ashley.logan@pihn.org |
| Health Educator | Monday – Friday 8:00 am – 4:00 pm | Amy Cunningham |





Ohio County

WEST VIRGINIA SCHOOL-BASED HEALTH CENTER DIRECTORY 2011-2012

Enrollment:

383

Grades:

05-08

Funding:

WV Bureau for Behavioral
Health (ESMH Planning
Grant)

School: Madison Elementary School

91 Zane St
Wheeling, WV 26003-2292
Phone: 304-243-0366
Fax: 304-243-0457

**School Mental Health Provider: Lynne Stanley, MSW, LGSW,
ACSW, CIT**

Phone: 304-234-3570 ext. 3300
Email: lstanley@northwoodhealth.com

**Days & Hours of Operation: Tues. (8am – 3pm); Wed. – Fri. (times
vary)**

Services Provided:

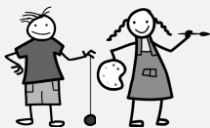
- Individual and family therapy
- Group therapy
- Home-based family therapy

Sponsoring Agency: Northwood Health Systems

111 19th Street or P.O. Box 6400
Wheeling, WV 26003
Phone: 304-234-3500

Contact Person: Lynne Stanley, MSW, LGSW, ACSW, CIT

Phone: 304-234-3570 ext. 3300
Email: lstanley@northwoodhealth.com





Pendleton County

WEST VIRGINIA SCHOOL-BASED HEALTH CENTER DIRECTORY 2011-2012

Schools Served:

*Pendleton Co. MS/HS
(7-12)
Enrollment: 465
Started: September 1991*

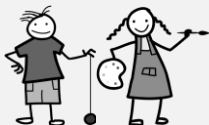
*North Fork Elementary
School
(PK-6, Head Start, Special
Ed)
304-567-2116
Enrollment: 108
Started: September 1991*

*Franklin Elementary School
(Head Start, PK-6, Special
Ed)
304-358-2206
Enrollment: 334
Started: September 2008*

*Brandywine Elementary
School (PK-6, Special Ed)
304-249-5193
Enrollment: 164
Started: January 2009*

Funding:

- WV Bureau for Public Health
- Sisters of St. Joseph Health & Wellness Foundation



Pendleton County School-Based Health Centers

P.O. Box 100 (PCC)
Franklin, WV 26807
Phone/Fax: (304) 358-3254

Contact Person: Jennifer Taylor-Ide, LPC

Phone: (304) 358-2355
Fax: (304) 358-3054
Email: jtayloride@gmail.com

Sponsoring Agency: Pendleton Community Care

P.O. Box 100
Franklin, WV 26807

| Services Provided | Clinic Schedule | Staff Names/Agency |
|------------------------------------|--|---|
| Medical | Varying Rotating Schedule – Contact Sponsoring Agency | Mary Ellen Wimer, NP mwimer@pcc-nfc.org King Seegar, MD kseegar@mac.edu |
| Mental Health | | Jennifer Taylor-Ide, MA, EdS, LPC jtayloride@gmail.com |
| Care Coordinator | | |
| Nursing | | Holley See, RN / School Nurse hsee@access.k12.wv.us |
| Other – Behavioral Health Educator | | Chris Roberson christeachag@yahoo.com |

Pendleton County School-Based Health Centers consist of one team serving four schools on a rotating basis.



Pleasants County

WEST VIRGINIA SCHOOL-BASED HEALTH CENTER DIRECTORY 2011-2012

Enrollment:

218

Grades:

PK-04

Funding:

- WV Bureau for Behavioral Health (SBMH Block Grant)
- WV Bureau for Behavioral Health (ESMH Planning Grant)

School: Belmont Elementary School

512 Riverview Drive
Belmont, WV 26134
Phone: 304-665-2456
Fax: 304-665-2408

School Mental Health Provider: Laura Rinard

Phone: 304-485-1721
Email: lrinard@westbrookhealth.com

Days & Hours of Operation: Thursdays

Services Provided:

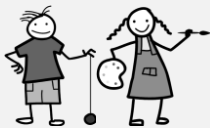
- Individual and family therapy
- Group therapy
- Case Management
- Psychiatric services provided at St. Marys office

Sponsoring Agency: Westbrook Health Services

2121 East Seventh Street
Parkersburg, WV 26101
Phone: 304-485-1721
Fax: 304-485-6710

Contact Person: Derek Snyder, Child/Family Services Director

Phone: 304-485-1721
Email: dsnyder@westbrookhealth.com





Pleasants County

WEST VIRGINIA SCHOOL-BASED HEALTH CENTER DIRECTORY 2011-2012

Enrollment:

383

Grades:

09-12

Funding:

- WV Bureau for Behavioral Health (SBMH Block Grant)
- WV Bureau for Behavioral Health (ESMH Planning Grant)

School: Pleasants County Middle School

510 Riverview Drive
Belmont, WV 26134
Phone: 304-665-2415
Fax: 304-665-2451

School Mental Health Provider: Laura Rinard

Phone: 304-485-1721
Email: lrinard@westbrookhealth.com

Days & Hours of Operation: Fridays

Services Provided:

- Individual and family therapy
- Group therapy
- Case Management
- Psychiatric services provided at St. Marys office

Sponsoring Agency: Westbrook Health Services

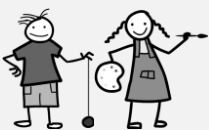
2121 East Seventh Street
Parkersburg, WV 26101
Phone: 304-485-1721
Fax: 304-485-6710

Contact Person: Derek Snyder, Child/Family Services Director

Phone: 304-485-1721
Email: dsnyder@westbrookhealth.com

Executive Director: JoAnn Powell, CEO

Phone: 304-485-1721





Pleasants County

WEST VIRGINIA SCHOOL-BASED HEALTH CENTER DIRECTORY 2011-2012

Enrollment:

276

Grades:

PK - 04

Funding:

- WV Bureau for Behavioral Health (SBMH Block Grant)
- Billing

School: St. Marys Elementary School

317 Washington Street
St Marys, WV 26170
Phone: 304-684-3510
Fax: 304-684-2640
School's Webpage: None provided.

School Mental Health Provider: Laura Rinard

Phone: 304-485-1721
Email: lrinard@westbrookhealth.com

Days & Hours of Operation: Wednesdays

Services Provided:

- Individual and family therapy
- Group therapy
- Case Management
- Psychiatric services provided at St. Marys office

Sponsoring Agency: Westbrook Health Services

2121 East Seventh Street
Parkersburg, WV 26101
Phone: 304-485-1721
Fax: 304-485-6710

Contact Person: Derek Snyder, Child/Family Services Director

Phone: 304-485-1721
Email: dsnyder@westbrookhealth.com

Executive Director: JoAnn Powell, CEO

Phone: 304-485-1721





Pleasants County

WEST VIRGINIA SCHOOL-BASED HEALTH CENTER DIRECTORY 2011-2012

Enrollment:

422

Grades:

09-12

Funding:

- WV Bureau for Behavioral Health (SBMH Block Grant)
- Billing

School: St. Marys High School

1002 Second Street
St Marys, WV 26170
Phone: 304-684-2421
Fax: 304-684-3859
School's Webpage: <http://www.home.wirefire.com/smhs>

School Mental Health Provider: Loura Rinard

Phone: 304-485-1721
Email: lrinard@westbrookhealth.com

Days & Hours of Operation: Tuesdays

Services Provided:

- Individual and family therapy
- Group therapy
- Case Management
- Psychiatric services provided at St. Marys office

Sponsoring Agency: Westbrook Health Services

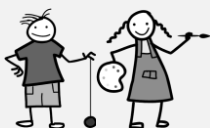
2121 East Seventh Street
Parkersburg, WV 26101
Phone: 304-485-1721
Fax: 304-485-6710

Contact Person: Derek Snyder, Child/Family Services Director

Phone: 304-485-1721
Email: dsnyder@westbrookhealth.com

Executive Director: JoAnn Powell, CEO

Phone: 304-485-1721





Ritchie County

OCTOBER 21, 2011

WEST VIRGINIA SCHOOL-BASED HEALTH CENTER DIRECTORY 2010-2011

Schools Served:

Ritchie County Middle School
 Ritchie County High School,
 Harrisville Elementary
 School,
 Smithville Elementary
 School,
 Creed Collins Elem. School,
 Ellenboro Elementary School

Enrollment:

RCMS 331
 RCHS 486
 HES 322
 SES 88
 CCES 263
 EES 137

Grades:

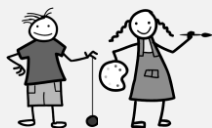
RCMS 6-8
 RCHS 9-12
 HES
 SES
 CCES
 EES

Starting Date:

January 1995

Funding:

WV Bureau for Public Health
 Sisters of St. Joseph Health
 & Wellness Foundation



Ritchie County Health & Wellness Center

Box 373 Harrisville, WV 26362 (mailing address)
 107 Ritchie County School Road, Ellenboro, WV 26346
 Phone: (304) 869-3650
 Fax: (304) 869-3091

Contact Person: Tara Shiflet

Phone: (304) 869-3650
 Fax: (304) 869-3091 Email: rcpcashiflet@gmail.com

Sponsoring Agency: Ritchie Regional Health Center.

P.O. Box 373
 Harrisville, WV 26362
 Executive Director: William Snider
 Phone: (304) 643-4005 Fax: (304) 643-4007
 Email: rpcasnider@gmail.com
 Medical Director: Floresita Edora, MD

| Services Provided | Clinic Schedule | Staff Names/Agency |
|---------------------------------|--|---|
| Medical | Monday – Friday 8:00 am – 4:00 pm | Floresita Edora, MD rcpcaedora@gmail.com Jodi Law, RNC, FNP rcpcajlaw@gmail.com |
| Mental Health | Monday – Tuesday 8:00 am – 4:00 pm Wednesday – ½ day | Brenda Tebay, MS, Psychologist rcpcatebay@gmail.com |
| Clerical – Care Coordination | Monday – Friday 8:00 am – 4:30 pm | Tara Shiflet rcpcashiflet@gmail.com |
| Nursing | Monday – Friday 7:30 am – 4:00 pm | Melissa Mahaney rcpcamahaney@gmail.com |
| Other – School Nurse | Thursday | Alisa Shepler, RN/School Nurse alisashepler@zoominternet.net |
| Dental Clinic | Third Wednesday-monthly | Mark Spiker, DDS |
| Asthma Van | Third Friday-every other month | Susan Aufdenkampe, RRT saufdenkampe@ccmh.org |



Tucker County

WEST VIRGINIA SCHOOL-BASED HEALTH CENTER DIRECTORY 2011-2012

Enrollment:

DTES: 202

TVES: 543

TCHS: 351

Grades:

DTES: PK - 08

TVES: PK - 08

TCHS: 09-12

Funding:

WV Bureau for Behavioral
Health (ESMH Planning
Grant)

School: Tucker Co. Schools

Davis Thomas Elementary School
Tucker Valley Elementary School
Tucker County High School

School Mental Health Provider:

This position is open because this program is in the planning stages.

Sponsoring Agency: Youth Health Services, Inc.

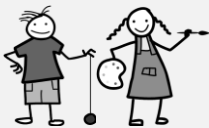
971 Harrison Avenue
Elkins, WV 26241
Phone: 304-256-7100

Contact Person: Fran Jackson, Evaluator

Phone: 304-574-9044
Email: yhsh66@frontier.com

Executive Director: Margy Burns

Phone: 304-636-9450
Email: yhsmargy@yahoo.com





Wayne County

WEST VIRGINIA SCHOOL-BASED HEALTH CENTER DIRECTORY 2011-2012

Enrollment:

1,041

Grades:

9-12

Co-Sponsors:

Valley Health Systems, Inc.
Prestera Center
Cabell Co. Board of Educ.

Starting Date:

October 1998

Funding:

- WV Bureau for Public Health
- Valley Health Systems

School: Spring Valley High School

#1 Timberwolf Drive
Huntington, WV 25704
Phone: 304-429-1699; Fax: 304-429-7315

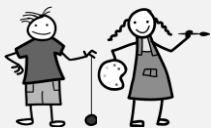
Spring Valley High Health Center

Address: same as above
Phone: 304-429-1764; Fax: 304-429-1746

Mental Health Center Contact Person:

Lora Sammons, West SBMH Supervisor
Phone: 304-525-7851 ext. 2127
Mobile: 304-416-2339
Email: lora.sammons@prestera.org

| Services Provided | Clinic Schedule | Staff Names/Agency |
|---------------------------------|---|--|
| Medical | Monday 8:00 am – 3:30 pm Wednesday 7:30 am – 3:30 pm | Mary Adams, FNP Jenny Wellman, FNP |
| Mental Health | Monday, Wednesday, Thursday, Friday, and every other Tuesday 8:30 am – 4:30 pm | Christy Hendrick, MA Christy.hendrick@prestera.org |
| Clerical – Care Coordination | Monday – Friday 7:30 am – 3:30 pm | Susan Dotson sdotson@vhs-wv.org |
| Nursing | Monday – Friday 7:30 am – 3:30 pm | Cindy Maynard, RN cmaynard@vhs-wv.org |
| Other – Dietitian | One day per month | Jenna Matthews, RD huntingtonwic@wvdhhr.org to Attn: Jenna |





Wayne County

WEST VIRGINIA SCHOOL-BASED HEALTH CENTER DIRECTORY 2011-2012

Enrollment:

482

Grades:

09-12

Funding:

Billing

School: Tolsia High School

#1 Rebel Drive
Fort Gay, WV 25514
Phone: 304-648-5566
Fax: 304-648-5447

School Mental Health Provider: Christy Hendrick, Therapist

Phone: 304-648-5221
Email: Christy.hendrick@prestera.org

School Mental Health Provider: Shanna Muncy, Case Manager

Phone: 304-648-5221
Email: shanna.muncy@prestera.org

Days & Hours of Operation:

every other Tues & Thurs; 7:30 am – 3:00 pm

Services Provided:

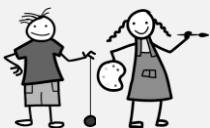
- Mental health counseling – individual, group and family
- Targeted case management
- Assessment / Treatment planning
- Crisis intervention
- Supportive intervention

Sponsoring Agency: Prestera Center for Mental Health

PO Box 8069
Huntington, WV 25705
Phone: 304-525-7851
Fax: 304-399-1022

Contact Person: Lora Sammons, West SBMH Supervisor

Phone: 304-525-7851 ext. 2127
Mobile: 304-416-2339
Email: lora.sammons@prestera.org





Webster County

OCTOBER 21, 2011

WEST VIRGINIA SCHOOL-BASED HEALTH CENTER DIRECTORY 2010-2011

School Served:

Webster County High School

Enrollment:

483

Grades:

9-12

Starting Date:

March 2008

Funding:

*Sisters of St. Joseph Health
& Wellness Foundation*



Webster County School-Based Community Health Center

One Highlander Drive
Upper Glade, WV 26266
Phone: (304) 226-3993
Fax: (304) 226-5003

Contact Person: Melissa Rogers

Phone: (304) 226-3993
Fax: (304) 226-5003
Email: melissarogers_365@hotmail.com

Sponsoring Agency: Camden-on-Gauley Medical Center, Inc.

PO Box 69, 10003 Webster Road
Camden-on-Gauley, WV 26208

Executive Director: Margaret Hickey, CEO
Medical Director: Richard Trenbath, MD
Phone: (304) 226-5725
Email: meg@cog-wv.org

| Services Provided | Clinic Schedule | Staff Names/Agency |
|------------------------------|---------------------------------------|---|
| Medical | Monday – Friday 8:00 am – 12:00 pm | Crystal Taylor, APRN, BC, FNP crystal-taylor@live.com |
| Mental Health | Thursday 9:00 am – 3:00 pm | Kitra Burnham Melissarogers_365@hotmail.com |
| Clerical – Care Coordination | | Melissa Rogers melissarogers_365@hotmail.com |
| Nursing | Monday – Friday 8:00 am – 12:00 pm | Felicia Groves, LPN |



Wirt County

OCTOBER 21, 2011

WEST VIRGINIA SCHOOL-BASED HEALTH CENTER DIRECTORY 2011-2012

Enrollment:

347

Grades:

K-04

Funding:

Billable Services

School: Wirt County Primary Center

P O Box 220
Elizabeth, WV 26143
Phone: 304-275-4263; Fax: 304-275-4263

School Mental Health Provider: Catherine Coyne

Phone: 304-494-5375
Email: ccoyme@westbrookhealth.com

Days & Hours of Operation: Tues, Thurs; 8am – 3:30pm

Services Provided:

- Individual psychotherapy
- Family therapy

Sponsoring Agency: Westbrook Health Services

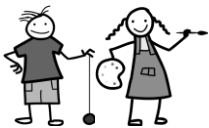
2121 East Seventh Street
Parkersburg, WV 26101
Phone: 304-485-1721
Fax: (304) 485-6710

Contact Person: Derek Snyder, Child/Family Services Director

Phone: 304-485-1721
Email: dsnyder@westbrookhealth.com

Executive Director: JoAnn Powell, CEO

Phone: 304-485-1721





Wirt County

OCTOBER 21, 2011

WEST VIRGINIA SCHOOL-BASED HEALTH CENTER DIRECTORY 2011-2012

Enrollment:

298

Grades:

05-08

Funding:

Billable Services

School: Wirt County Middle School

P O Box 699
Elizabeth, WV 26143
Phone: 304-275-3977; Fax: 304-275-4257

School Mental Health Provider: Catherine Coyne

Phone: 304-494-5375
Email: ccoyne@westbrookhealth.com

Days & Hours of Operation: Tues, Thurs; 8am – 3:30pm

Services Provided:

- Individual psychotherapy
- Family therapy

Sponsoring Agency: Westbrook Health Services

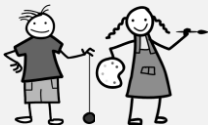
2121 East Seventh Street
Parkersburg, WV 26101
Phone: 304-485-1721
Fax: (304) 485-6710

Contact Person: Derek Snyder, Child/Family Services Director

Phone: 304-485-1721
Email: dsnyder@westbrookhealth.com

Executive Director: JoAnn Powell, CEO

Phone: 304-485-1721





Wirt County

OCTOBER 21, 2011

WEST VIRGINIA SCHOOL-BASED HEALTH CENTER DIRECTORY 2011-2012

Enrollment:

322

Grades:

09-12

Funding:

Billable Services

School: Wirt County High School

P O Box 219

Elizabeth, WV 26143

Phone: 304-275-4241; Fax: 304-275-3271

School Mental Health Provider: Catherine Coyne

Phone: 304-494-5375

Email: ccoyme@westbrookhealth.com

Days & Hours of Operation: Tues, Thurs; 8am – 3:30pm

Services Provided:

- Individual psychotherapy
- Family therapy

Sponsoring Agency: Westbrook Health Services

2121 East Seventh Street

Parkersburg, WV 26101

Phone: 304-485-1721

Fax: (304) 485-6710

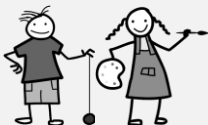
Contact Person: Derek Snyder, Child/Family Services Director

Phone: 304-485-1721

Email: dsnyder@westbrookhealth.com

Executive Director: JoAnn Powell, CEO

Phone: 304-485-1721





Wood County

OCTOBER 21, 2011

WEST VIRGINIA SCHOOL-BASED HEALTH CENTER DIRECTORY 2011-2012

Enrollment:

298

Grades:

05-08

Funding:

- WV Bureau for Behavioral Health (SBMH Block Grant)
- WV Bureau for Behavioral Health (ESMH Planning Grant)
- Billable Services

School: Mckinley Elementary School

1130 19th St
Parkersburg, WV 26101-2607
Phone: 304-420-9581; Fax: 304-420-9582

School Mental Health Provider: Rachael Jarvis

Phone: 304-494-5375
Email: ccoynne@westbrookhealth.com

Days & Hours of Operation: Mon, Wed, Fri; 8am – 3:30pm

Services Provided:

- Individual psychotherapy
- Family therapy

Sponsoring Agency: Westbrook Health Services

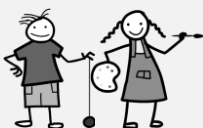
2121 East Seventh Street
Parkersburg, WV 26101
Phone: 304-485-1721
Fax: (304) 485-6710

Contact Person: Derek Snyder, Child/Family Services Director

Phone: 304-485-1721
Email: dsnyder@westbrookhealth.com

Executive Director: JoAnn Powell, CEO

Phone: 304-485-1721





Wood County

OCTOBER 21, 2011

WEST VIRGINIA SCHOOL-BASED HEALTH CENTER DIRECTORY 2010-2011

Schools Served:

Jefferson Elementary Center

Enrollment:

478

Grades:

PK-6

Starting Date:

August 2006

Funding:

Sisters of St. Joseph Wellness

Additional Schools

Receiving Services:

Services are provided to all Wood County

Schools.



Jefferson Health & Wellness Center

1200 Stephenson Avenue
Parkersburg, WV 26101
Phone: (304) 420-5819
Fax: (304) 422-8850

Contact Person: Sherry St. Clair

Phone: (304) 420-5819
Fax: (304) 422-8850
Email: rcpcastclair@gmail.com

Sponsoring Agency: Ritchie Regional Health Center.

P.O. Box 373
Harrisville, WV 26362

Executive Director: William Snider
Phone: (304) 643-4005
Fax: (304) 643-4007
Email: rcpcasnider@gmail.com
Medical Director: Floresita Edora, MD

| Services Provided | Clinic Schedule | Staff Names/Agency |
|----------------------------|--------------------------------------|---|
| Medical | Monday – Friday 8:00 am – 4:00 pm | Sandra E. Swisher , RN, MSN, CFNP rcpcaswisher@gmail.com Dr. Floresita Edora, MD |
| Mental Health | Thursday 8:00 am – 4:00 pm | Brenda Tebay, Psychologist |
| Clerical/Care Coordination | Monday – Friday 8:00 am – 4:00 pm | Sherry St. Clair rcpcastclair@gmail.com |
| Nursing | Monday – Friday 8:00 am – 4:30 pm | Barb Oliver, MA rcpcaoliver@gmail.com Carol Rader, LPN rcpcarader@gmail.com |

COMMUNITY-BASED PROGRAMS PROVIDING SCHOOL HEALTH



Hancock County

OCTOBER 21, 2011

WEST VIRGINIA SCHOOL-BASED HEALTH CENTER DIRECTORY 2010-2011

School Served:

St. Paul School

Enrollment:

252 (PK 48; K-8 204)

Grades:

PK-8

Starting Date:

July 2005

Funding:

*Sisters of St. Joseph Health
& Wellness Foundation*

*Diocese of Wheeling-
Charleston*

St. Paul School Health Center

140 Walnut Street
Weirton, WV 26062
Phone: (304) 748-5225
Fax: (304) 748-4163

Contact Person: Jackie Gaughenbaugh

Phone: (304) 748-5225
Fax: (304) 748-4163
Email: gofenba@yahoo.com

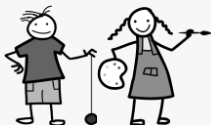
Sponsoring Agency: Diocese of Wheeling-Charleston

1300 Byron Street, P.O. Box 230
Wheeling, WV 26003

**Sponsor Contact: Robyn Hammond, Director of
Catholic Identity and Advancement**

Phone: (304) 233-0880, ext. 359
Fax: (304) 233-8551
Email: rhammond@dwc.org

| Services Provided | Clinic Schedule | Staff Names/Agency |
|---------------------------------|--|--|
| Medical | | |
| Mental Health | Wednesday & Thursday 8:00 am – 4:00 pm | Paul Weigel, LPC pcwlpc@yahoo.com |
| Clerical – Care Coordination | Tuesday, Wednesday & Thursday 8:30 am – 4:30 pm (20 hours per week) | Jackie Gaughenbaugh gofenba@yahoo.com |
| Nursing | Monday – Friday 8:00 am – 4:00 pm | Jill Mullens, RN jmullens6@comcast.net |



COMMUNITY-BASED PROGRAMS PROVIDING SCHOOL HEALTH



Ohio County

OCTOBER 21, 2011

WEST VIRGINIA SCHOOL-BASED HEALTH CENTER DIRECTORY 2011-2012

School Served:

Wheeling Catholic Elementary
School

Enrollment:

20

Grades:

PK-1

Starting Date:

July 2005

Funding:

Sisters of St. Joseph Health
& Wellness Foundation
Diocese of Wheeling-
Charleston

Wheeling Catholic Elementary School Health Program

77 Fourteenth Street
Wheeling, WV 26003
Phone: (304) 233-1515, ext. 111
Fax: (304) 233-1516

Contact Person: Mary Ann Glusich, RN/Program Coordinator

Phone: (304) 233-1515, ext. 111
Fax: (304) 233-1516
Email: mglusich@yahoo.com

Sponsoring Agency: Diocese of Wheeling-Charleston

1300 Byron Street, P.O. Box 230
Wheeling, WV 26003

Sponsor Contact: Robyn Hammond, Director of Catholic Identity and Advancement

Phone: (304) 233-0880, ext. 359
Fax: (304) 233-8551
Email: rhammond@dwc.org

| Services Provided | Clinic Schedule | Staff Names/Agency |
|------------------------------|--|--|
| Medical | | |
| Mental Health | Monday/Tuesday/Thursday 8:00 am – 4:00 pm | Erin McFarland, M.Ed., LPC. EBanner93@comcast.net |
| Clerical – Care Coordination | Monday/Wednesday/Thurs 7:30-3:00 (up to 20 hours per week) | Brenda Orth borthshp@yahoo.com |
| Nursing | Monday/Wednesday/Fri 7:30-3:00 (up to 20 hours per week) | Mary Ann Glusich, RN, BSN mglusich@yahoo.com |
| Vision Screening Nurse | Variable | Ann Thomas, RN |



Child Adolescent Behavioral Health Grantees 2011 - 2012 State Funds - Children's Clinical Outreach Services Liaisons

| CHILDREN'S LIAISON | COMPREHENSIVE BEHAVIORAL HEALTH CENTER | LIAISON ADDRESS | LIAISON PHONE/FAX |
|---|--|---|--|
| <p>Judy McCauley jmccauley@achcinc.org Randolph, Barbour, Tucker, Upshur</p> | <p>Appalachian Community Health Center 725 Yokum Street Elkins, WV 26241 303-636-3232 or www.achcinc.org</p> | <p>725 Yokum St. Elkins, WV 26241</p> | <p>Office: 304-636-8212 Fax: 304-636-8212 (same)</p> |
| <p>Monica Cogle mcogle@eastridgehs.org Berkeley, Jefferson, Morgan</p> | <p>EastRidge Health Systems 235 South Water Street Martinsburg, WV 25404 304-263-8954 www.eastridgehealthsystems.org</p> | <p>235 S. Water St. Martinsburg, WV 25404</p> | <p>Office: 304-263-8954, ext.174 Fax: 304-264-0763</p> |
| <p>Tracy King tking@fmrs.org Fayette, Monroe, Raleigh, Summers</p> | <p>FMRS Health Systems, Inc. 101 S. Eisenhower Dr. Beckley, WV 25801 304-256-7100 www.fmrs.org</p> | <p>101 South Eisenhower Dr. Beckley, WV 25801</p> | <p>Office: 304-256-7100, ext. 138 Fax: 304-929-5417</p> |

| CHILDREN'S LIAISON | COMPREHENSIVE BEHAVIORAL HEALTH CENTER | LIAISON ADDRESS | LIAISON PHONE/FAX |
|--|--|---|---|
| vacant xxxxx@healthwaysinc.com Brooke, Hancock | HealthWays, Inc. 501 Colliers Way Weirton, WV 26062 304-723-5440 or 800-774-2429 www.healthwaysinc.com | 501 Colliers Way Weirton, WV 26062 | Office: 304-723-5440, ext. 155 Fax: 304-723-0665 |
| Robin Weiner robinlrcw@yahoo.com Logan, Mingo | Logan-Mingo Area Mental Health, Inc. P.O. Box 176 Logan, WV 25601 304-792-7130 www.lmamh.org | P. O. Box 176 Logan, WV 25601 (304) 792-7130 | Office: 304-792-7130 Fax: 304-792-7146 |
| Lynne Stanley lstanley@northwoodhealth.com Marshall, Ohio, Wetzel | Northwood Health Systems, Inc. 111 19 th Street or P.O. Box 6400 Wheeling, WV 26003 304-234-3500 www.northwoodhealth.com | 111 19 th Street Or 2121 Eoff Street Wheeling, WV 26003 | Office: 304-234-3500, ext 3300 Fax: 304-234-3511 |
| LuAnn Edge ledge@potomachighlandsguild.com Grant, Hampshire, Hardy, Mineral, Pendleton | Potomac Highlands Guild, Inc. P.O. Box 1119 Petersburg, WV 26847 304-257-1155 www.potomachighlandsguild.com | PO Box 1119 Petersburg, WV 26847 | Office: 304-257-1155, ext. 232 Fax: 304-257-1945 |

| CHILDREN'S LIAISON | COMPREHENSIVE BEHAVIORAL HEALTH CENTER | LIAISON ADDRESS | LIAISON PHONE/FAX |
|---|--|--|--|
| <p>Mindy Wass Mindy.wass@prestera.org Boone, Cabell, Clay, Kanawha, Lincoln, Mason, Putnam, Wayne</p> | <p>Prestera Center for Mental Health Services 3375 Rt. 60 E Huntington, WV 25705 304-525-7851 or 800-642-3434 www.prestera.org</p> | <p>3375 Rt. 60 E Prestera Way Huntington, WV 25705</p> | <p>Office: 304-525-7851, ext. 1268 Fax: 304-399-1202</p> |
| <p>Jessica Crowder jcrowder@shsinc.org Greenbrier, Nicholas, Webster, Pocahontas</p> | <p>Seneca Health Services, Inc. 1305 Webster Road Summersville, WV 26651 304 or 800-872-6503 www.shsinc.org</p> | <p>804 Broad St. Summersville, WV 26651</p> | <p>Office: 304 or 800-872-2090 Ext. 108 Fax: 304- 872-1685</p> |
| <p>Sonnee Stanley sstanley@shcmhc.com Mercer, McDowell, Wyoming</p> | <p>Southern Highlands Mercer-McDowell-Wyoming Mental Health Council, Inc. 200 12th Street Extension Princeton, WV 24740 304-425-9541 www.shcmhc.com</p> | <p>200 12th Street Extension Princeton, WV 24740</p> | <p>Office: 304- 425-9541 ext. 261 Fax: 304-425-1332</p> |

| CHILDREN'S LIAISON | COMPREHENSIVE BEHAVIORAL HEALTH CENTER | LIAISON ADDRESS | LIAISON PHONE/FAX |
|--|---|--|--|
| Peggy Tordella ptordella@uscwv.org Braxton, Doddridge, Gilmer, Harrison, Lewis, Marion, Taylor | United Summit Center # 6 Hospital Plaza Clarksburg, WV 26301 304-623-5661 800-786-6480 www.uscwv.org | # 6 Hospital Plaza Clarksburg, WV 26301 | Office: 800-786-6480 304-623-5661, ext 275 Fax: 304-623-2989 Sutton office: 304-765-2801 Fax: 304-765-2634 |
| Laura Manuel Walls, MA lwalls@valleyhealthcare.org Monongalia, Marion, Preston, Taylor | Valley HealthCare System 301 Scott Avenue Morgantown, WV 26508 304-296-1731 or 800-232-0020 www.valleyhealthcare.org | 301 Scott Avenue Morgantown, WV 26508 | Office: 304-296-1731, ext. 4422 Fax: 304-225-2288 |
| vacant xxxxx@westbrookhealth.com Calhoun, Jackson, Pleasant, Ritchie, Roane, Tyler, Wood, Wirt | Westbrook Health Services, Inc. 2121 7 th Street Parkersburg, WV 26101 304-485-1721 or 800-579-5844 www.westbrookhealth.com | 2121 7 th Street Parkersburg, WV 26101 | Office: 304-485-1721, ext. 242 Fax: 304-485-1478 |
| Jackie Payne Division of Children's Behavioral Health jackie.f.payne@wv.gov Statewide | Bureau for Behavioral Health and Health Facilities 304-558-0627 www.wvdhhr.org/bhhf | 350 Capitol Street Room 350 Charleston, WV 25301 | Office: 304-558-8042 Fax: 304-558-1008 |

